

PRODUCT NO.

61729

PRODUCT NUMBER CODE

61729- X 0 X X X P S L F

BASE PRODUCT NUMBER

HOUSING COLOR OPTION

0 - WHITE  
1 - BLACK

SHIELD OPTION

1 - FULL BACK  
2 - PARTIAL BACK  
S - FULL BACK  
(SPECIAL MATERIAL FOR 12,000 DURABILITY CYCLES)

TERMINAL PLATING OPTION

0 - 50u" NI UNDERPLATED  
30u" GXT CONTACT AREA  
100u" TIN/LEAD TAIL AREA  
FOR P/N'S WITHOUT SUFFIX "LF"  
100u" PURE TIN TAIL AREA  
FOR P/N'S WITH SUFFIX "LF"  
1 - 50u" NI UNDERPLATED  
30u" GOLD CONTACT AREA  
100u" TIN/LEAD TAIL AREA  
FOR P/N'S WITHOUT SUFFIX "LF"  
100u" PURE TIN TAIL AREA  
FOR P/N'S WITH SUFFIX "LF"

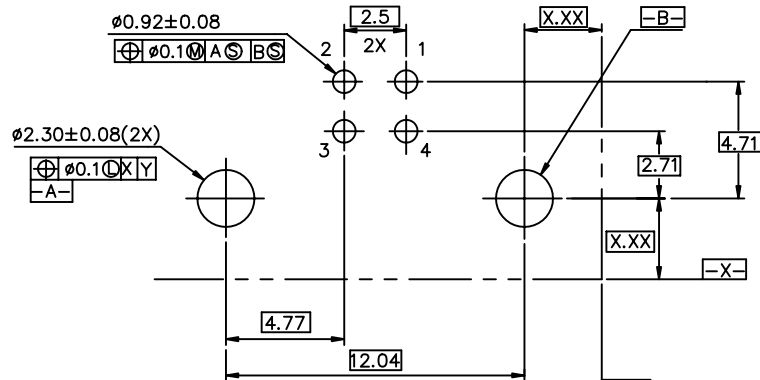
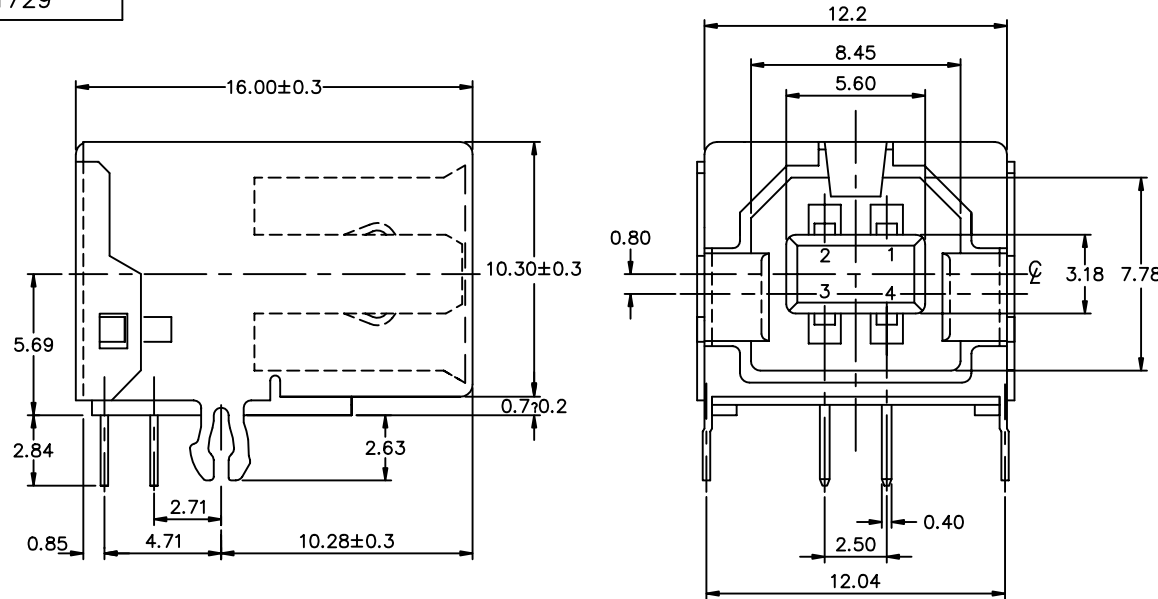
PACKAGING OPTION

B-TUBES  
R-TAPE & REEL

DATE CODE OPTION

ONLY FOR PANASONIC

LEAD FREE OPTION

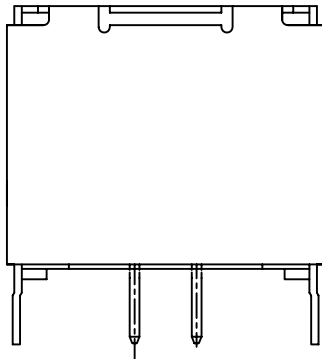


P.C. BOARD LAYOUT

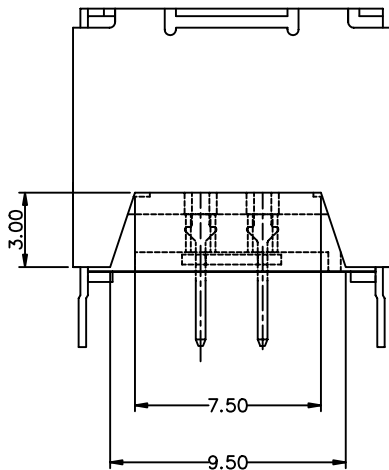
mat'l. code				tolerances unless otherwise specified		CUSTOMER COPY		FCJ		
ltr	ecn no	dr	date	linear	.0 ± 0.30	projection	title			
S	N05-0242	PH	08/22/05		.00 ± 0.20	MM/INCH	USB RECEPTACLE B TYPE			
T	N06-0103	HB	04/15/06		.000 ± 0.10					
U	N08-0238	R.B	2008/11/03	angles	± 2°	scale	product family		code	
				dr	SHIRLEY HSU 03/03/97		MM/INCH	USB		
				enrg	R Y LIU 03/03/97		size	dwg no		sheet
P	T04-0206	W L	05/13/04	chr	R Y LIU 03/03/97		4 : 1	61729		1 of 2
R	N04-0130	PH	12/22/04	appd	JENN TSAO 03/03/97	A3				
sheet	revision	U	U							
index	sheet	1	2							

PRODUCT NO.

61729




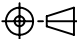
TYPE "1" FULL BACK



TYPE "2" PARTIAL BACK

NOTES:

1. MATERIAL:  
SHIELD & CONTACTS: COPPER ALLOY  
HOUSING: UL 94V-0 THERMOPLASTIC. COLOR: SEE PRODUCT NUMBER CODE.
2. PLATING: SEE PRODUCT NUMBER CODE.  
SHIELD: BRIGHT TIN  
NICKEL UNDERPLATE.
3. DATUMS & BASIC DIMENSIONS TO BE DETERMINED BY CUSTOMER
4. RECOMMENDED BOARD THICKNESS IS 1.57 mm (.062)
5. PACKING STANDARD GS-14-920 WILL BE APPLIED FOR LEAD FREE P/N'S
6. FOR LEAD FREE P/N, THE PRODUCT MEET EUROPEAN UNION DIRECTIVES AND OTHER COUNTRY REGULATION AS DESCRIBED IN GS-22-008
7. FOR LEAD FREE P/N'S, THE HOUSING WILL WITHSTAND EXPOSURE TO 260°C PEAK TEMPERATURE FOR 40 SECONDS IN A CONVECTION, INFRO-RED OR VAPOR PHASE REFLOW OVEN.
8. THE PART CAN BE USED FOR PIP PROCESS.

mat'l. code				tolerances unless otherwise specified		CUSTOMER COPY		 www.fciconnect.com	
ltr	ecn no	dr	date	linear	.0 ± 0.20	projection		title	
u					.00 ± 0.10			USB RECEPTACLE B TYPE	
					.000± 0.05				
				angles	± 2°			product family	code
				dr	SHIRLEY HSU 03/03/97	MM/INCH		USB	
				enr	R Y LIU 03/03/97	↔		size	sheet
				chr	R Y LIU 03/03/97	scale		61729	2 of 2
				appd	JENN TSAO 03/03/97	5 : 1	A3		
sheet	revision								
index	sheet								